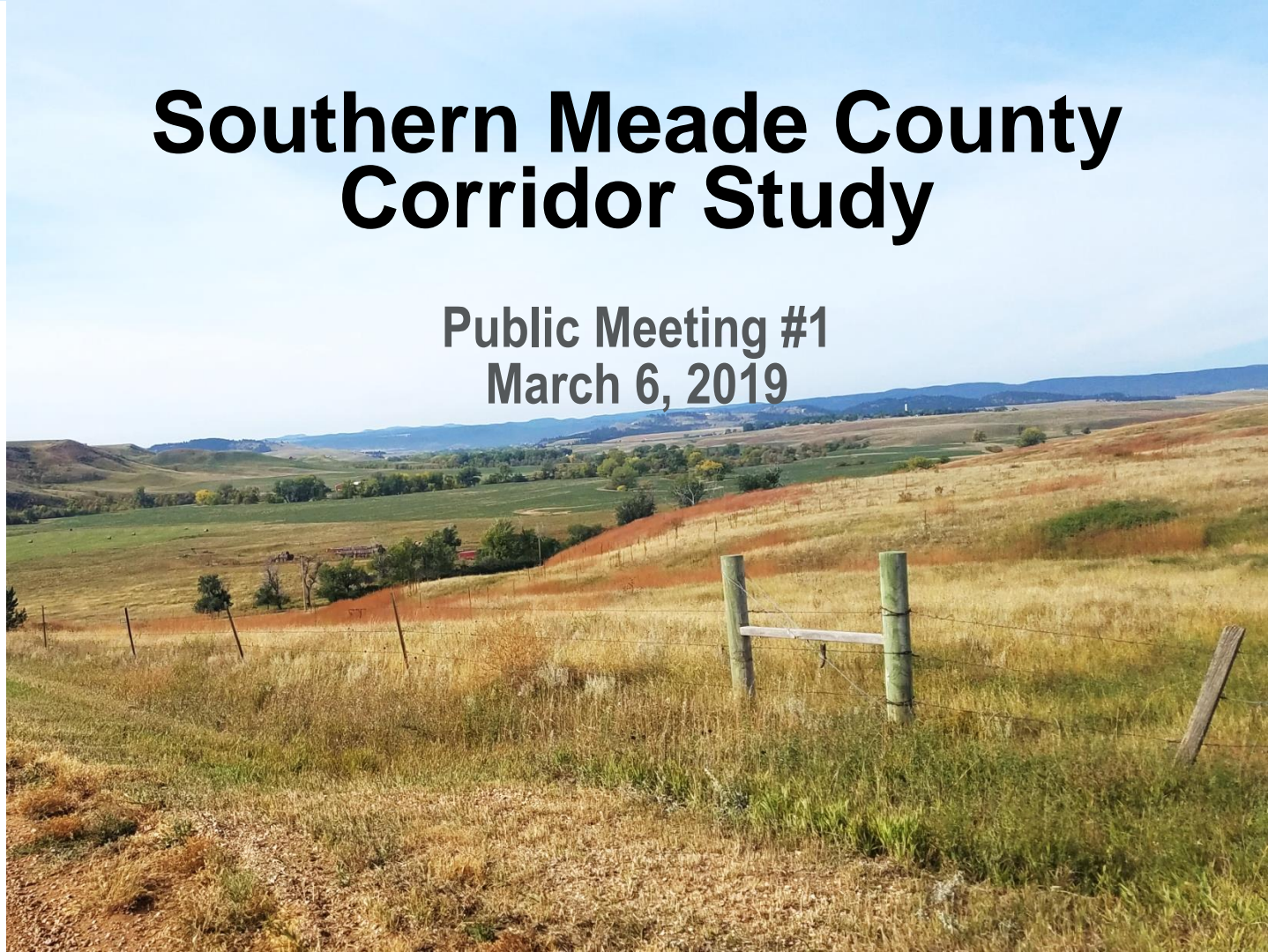




# Southern Meade County Corridor Study

Public Meeting #1  
March 6, 2019



# OUTLINE

- What is a corridor study?
- What is the purpose of the Southern Meade County Corridor Study?
- What are the boundaries of the study area?
- Who is involved in the study?
- What is the timeline of the study?
- What will the corridor study take into account?
- What are the goals?
- How can the public get involved and provide feedback?
- Who can I contact with questions or concerns?

# WHAT IS A CORRIDOR STUDY?

- First step in planning for the future of a transportation facility
  - Examining existing and expected future conditions
  - Defining the corridor's needs
  - Develop and analyze different alternatives (including no-build and build)
  - Offer recommendations based on study findings and public feedback

→ *Where could a roadway go?*

→ *Is it necessary?*

→ *Is it feasible?*

→ *What alternative(s) provide the best value to the user at the lowest cost and associated impacts?*

# WHAT IS NOT INVOLVED IN A CORRIDOR STUDY?

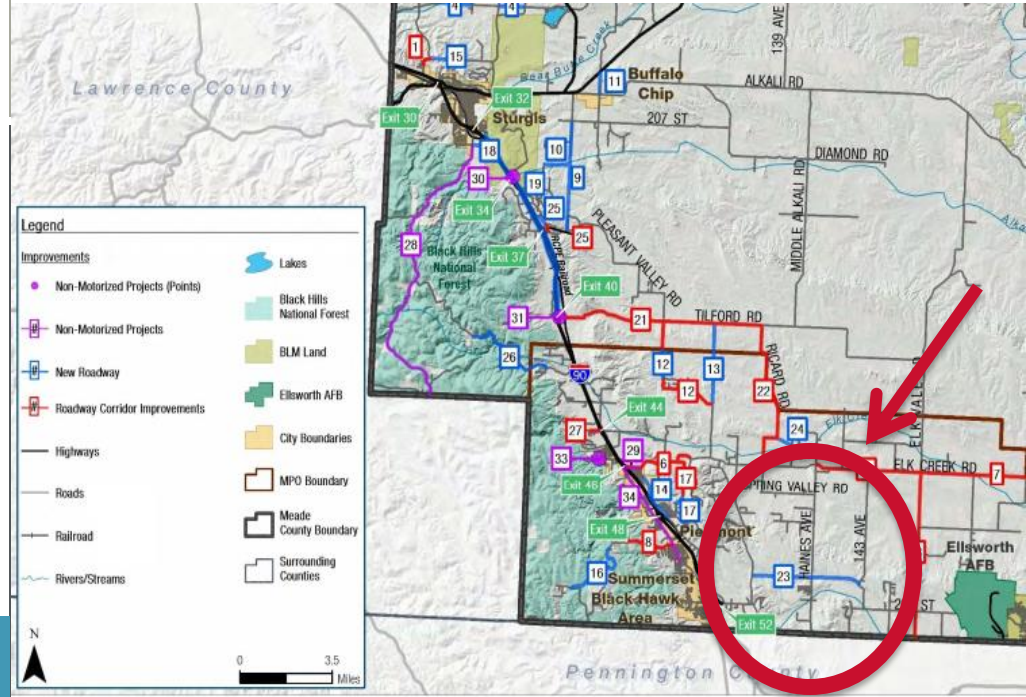
- Acquiring right-of-way
- Putting together construction plans
- Identifying sources of funding for construction
- Building a roadway

# PURPOSE OF STUDY

- Meade Moving Forward 2040 identified the need for an east-west corridor in this area
- Corridor preservation/High level planning
- Area of county likely to see development (primarily rural residential) within the 20 year planning horizon
- Framework for future development
- No near term funding or plan to construct identified by public agencies at this time



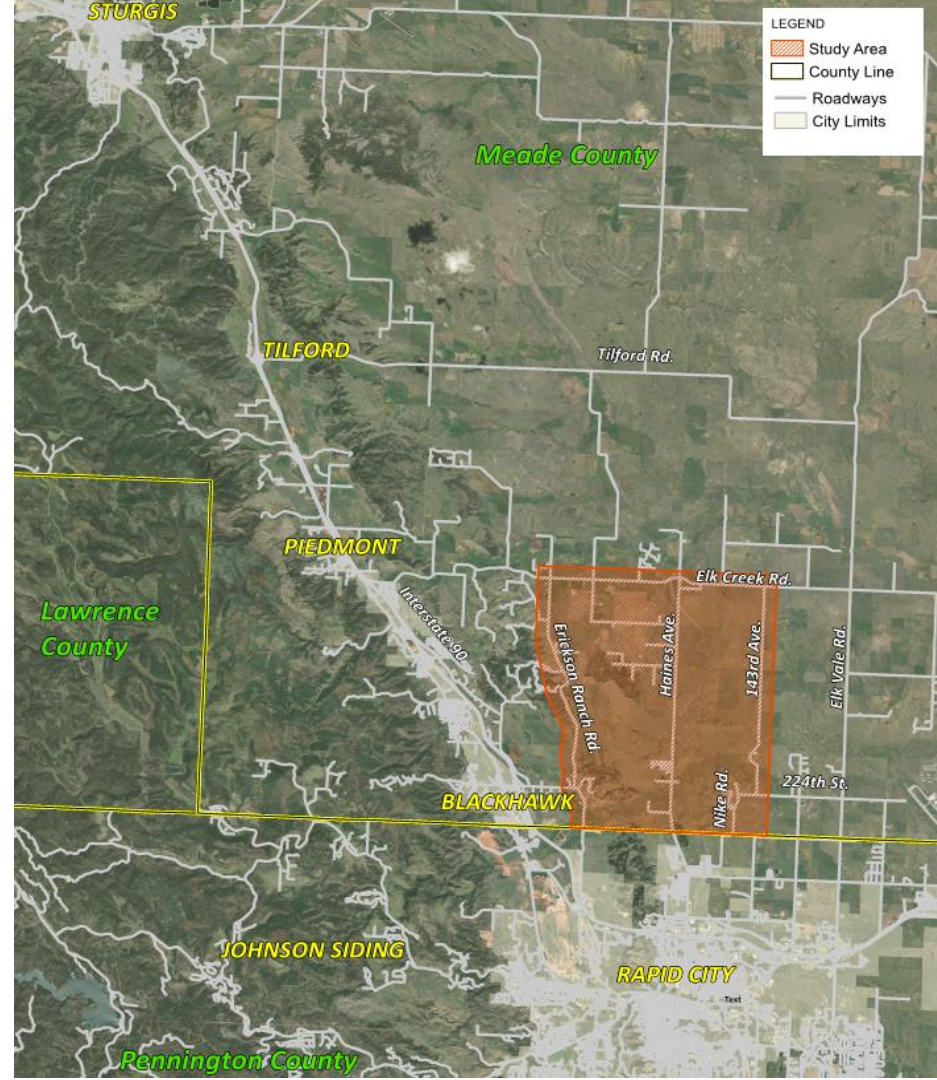
## MEADE *Moving Forward* 2040 Transportation Plan



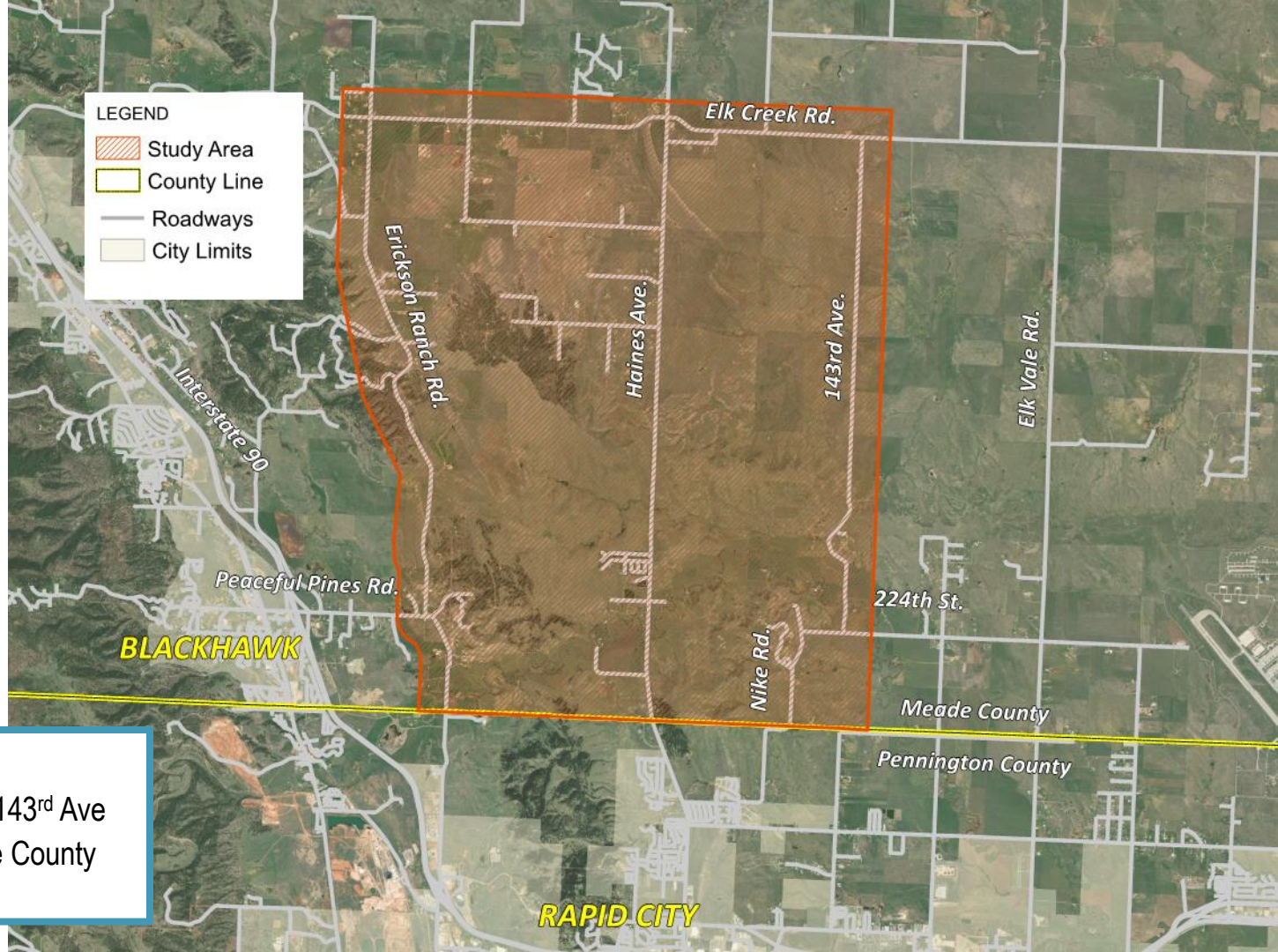
# STUDY AREA

## Study Area:

- Erickson Ranch Rd to 143<sup>rd</sup> Ave
- Elk Creek Rd to Meade County Southern Border



# STUDY AREA



## Study Area:

- Erickson Ranch Rd to 143<sup>rd</sup> Ave
- Elk Creek Rd to Meade County Southern Border

# STUDY PARTNERS

- **Advisory Agencies:**

- Meade County
- Rapid City Area MPO
- South Dakota Department of Transportation (SDDOT)
- Federal Highway Administration

- **Consultant Team:**

- HDR

- **Public Members/Stakeholders:**

- Landowners and Business Owners
- Traveling Public and Concerned Citizens



# SCHEDULE



**Project Kickoff**

January 2019



**Data Gathering**

Jan - Mar 2019



**Public Meeting #1**

Mar 2019



**Analysis**

Apr - July 2019



**Public Meeting #2**

July 2019



**Draft Report**

Sept - Nov 2019



**Public Meeting #3**

November 2019

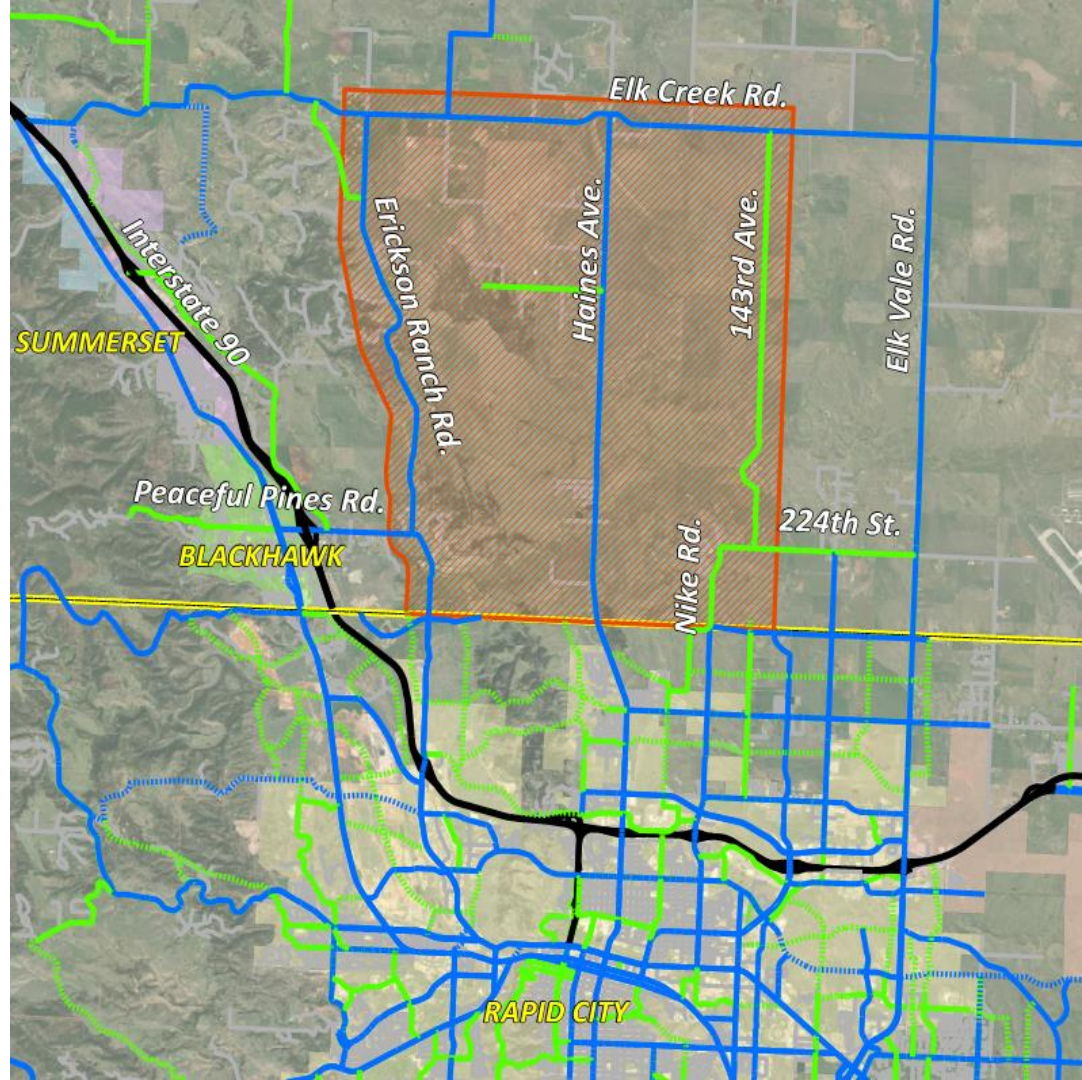


**Final Report**

December 2019

# STUDY CONSIDERATIONS

- Connectivity with Existing and Proposed Roads
- Topography
- Typical Section (Road Width/Surfacing)
- Environmental Constraints
- Traffic Forecasts
- Crash Data
- Utility Planning



# GOALS OF THE STUDY



## IDENTIFY

- Collect historical crash data, traffic counts, topography, existing and future land use, and review previous studies
- Perform environmental scan to determine environmental sensitivities.
- Identify up to three build alternatives for a future east-west corridor connection. A no build option will also be analyzed.
- Gather Public Input



## ANALYZE

- Analyze traffic for current and future conditions
- Evaluate cost of constructing build alternatives
- Investigate and avoid impacts to environmental concerns such as a floodplain, known historical property, wetlands, and existing private land developments



## RECOMMEND

- Examine each alternative at the conceptual level to determine the advantages and disadvantages.
- Provide recommended alternatives to Meade County and the MPO.
- Summarize findings and recommendations in the draft corridor study report and present to the study advisory team and the public.



## APPROVE

- Finalize corridor study report after incorporating comments from the study advisory team and the public.

# ENVIRONMENTAL OVERVIEW

- Floodplain
- Historic and Archeological Preservation
- Hazardous Substances
- Wetlands
- Wildlife/Threatened and Endangered Species
- Section 4(f) and 6(f) Resources
  - Public Parks or Recreation Lands, Wildlife Refuges, Historic Sites, etc
- Deliverable:
  - Purpose and Need
  - Environmental Overview Report



## **PUBLIC INPUT**

- What do you think the transportation needs of the study area are?
- What are your areas of concern?
- Environmental Sensitivities?
- New buildings?
- Recently constructed improvements?
- Existing or proposed private utilities?
- What are your future development plans?
- Safety concerns?



## **Comment Cards**



## **Project Website**

[www.SouthernMeadeCountyCorridorStudy.com](http://www.SouthernMeadeCountyCorridorStudy.com)

# PROJECT WEBSITE



## UPCOMING EVENTS

**Open House Meeting**

Wednesday, March 6, 2019  
5:00 pm - 7:00 pm

[View Event Details](#)

The open house will be informal, with one-on-one discussion available with Rapid City Area MPO, Meade County, SDDOT and consultant staff.

Any individuals with disabilities who will require a reasonable accommodation

***[www.SouthernMeadeCountyCorridorStudy.com](http://www.SouthernMeadeCountyCorridorStudy.com)***

# STEPS MOVING FORWARD

January 2019 – *Project Kickoff*

January - March 2019 – *Data Collection*

March 2019 – *Public Meeting #1*

April - June 2019 – *Traffic Analysis*

April - June 2019 – *Alternatives Development*

July 2019 – *Environmental Scan*

July 2019 – *Public Meeting #2 / Landowner Group Meetings*

September 2019 – *Select Recommended Alternatives*

September - November 2019 – *Draft Corridor Study Report*

November 2019 – *Public Meeting #3*

December 2019– *Finalize Corridor Study Report*

# STUDY CONTACTS

## Consultant Team Contact:

Stacia Slowey, PE

Project Manager

[stacia.slowey@hdrinc.com](mailto:stacia.slowey@hdrinc.com)

Phone: 605-791-6109

## Rapid City Area MPO Project Manager:

Kelly Brennan

Long Range Planner

[kelly.brennan@rcgov.org](mailto:kelly.brennan@rcgov.org)

Phone: 605-394-4120

## Meade County Contact:

Bill Rich

Meade County Planning

[billr@meadecounty.org](mailto:billr@meadecounty.org)

Phone: 605-347-3818

***THANK YOU FOR PARTICIPATING!***

***QUESTIONS?***